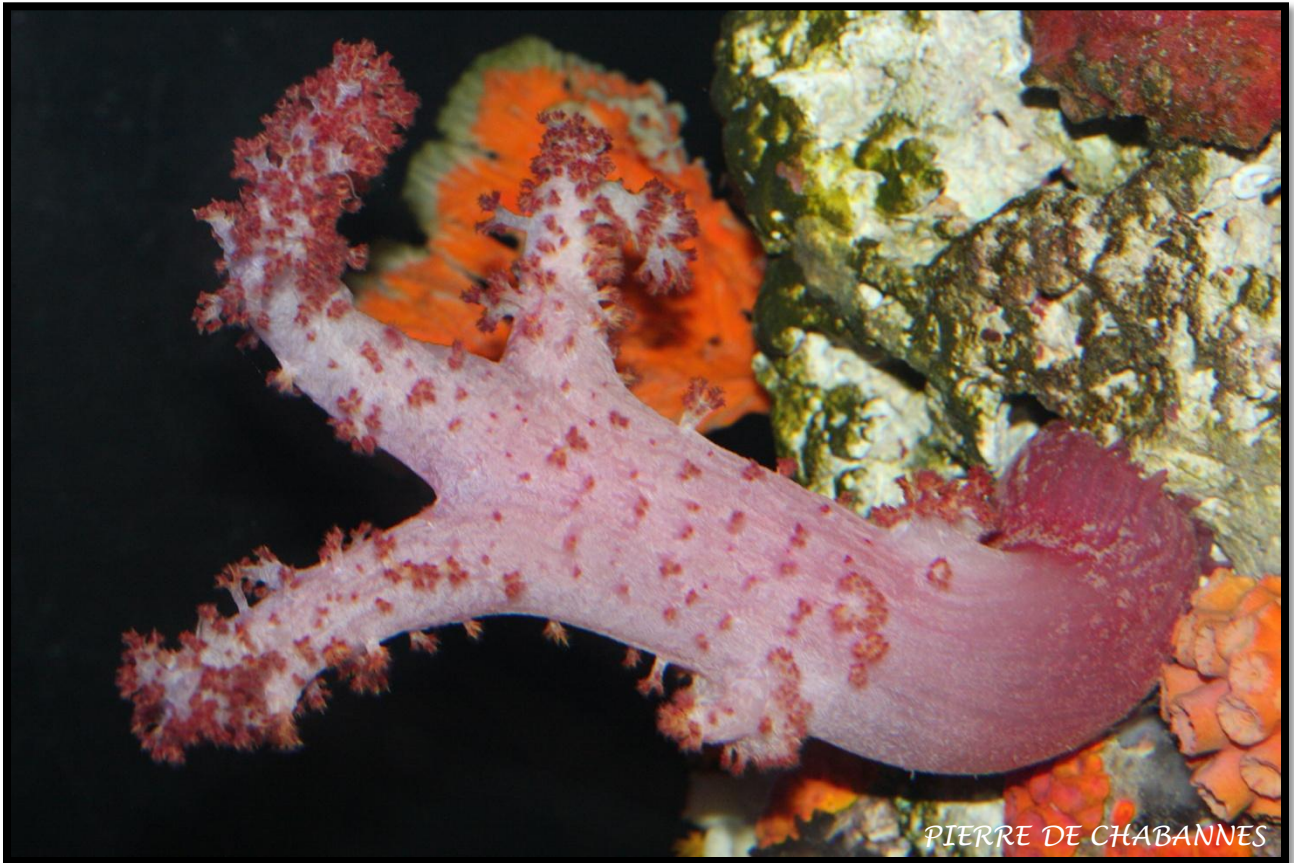


FLOWER TREE CORAL

Scleronephthya sp.

Studer, 1887



CLASSIFICATION

Class: Anthozoa

Order: Alcyonacea

Family: Nephtheidae

8 species recognized



NOT LISTED

RARE



NOT LISTED

Identification : Colonies are arborescent and usually fairly small, reaching 10 cm in length (although a species can reach 50 cm). Coloration variable, from pink to orange or yellow. Polyps only found on branches. Spine-shaped sclerites not visible.

Range: The 8 known species are widespread in the Indo-Pacific region, from Red Sea and East Africa to Solomon Islands.

Habitat : Often found on current-exposed steep walls and near caves, down to 85 m.

Behavior: Polyps feed on zooplankton, mostly at night. They remain extended most of the time. Azooxanthellate species, living usually in groups.

Status in the wild: Species from this genus are locally common where suitable living conditions are found. Potentially threatened by pollution and global warming.

In captivity: Species from this genus are unidentifiable without a microscopic examination. They're usually very rare in public collections and sometimes kept in private collections although quite hard to maintain alive and feed. Bred by fragging.